

Textile Taskworx® Tile

Stijlnummer	5T291	
Collectie	Suited	
Producttype	Tapijttegel	
Construction	Standard	Data + Performance
Type Fabricage	ISO 2424	tufted 1/10" 39.4 per 10cm
Uitzicht	ISO 2424	Multilevel-Patroonlus
Verfmethode	EN 994	100% In Oplossing Geverfd
Productformaat	EN 994	50 cm x 100 cm 10 tiles (5 m²) per box
Primaire Backing	ISO 2424	Pet Nonwoven
Secundaire Backing	ISO 2424	Taskworx® Tegel Polymeer Gemodificeerd Bitumen
Vezel	ISO 2424	Ecosolution Q100™ Polyamide 6 Bevat 100% Gerecycleerd Materiaal
Totale Dikte	ISO 1765	7.9mm*
Afgewerkte Pooldikte	ISO 1766	2.3 mm*
Totale Massa	ISO 8543	4686 g/m²*
Getuft Gewicht	ISO 2424	949 g/m²
Effectieve Poolmassa	ISO 8543	303 g/m²*
Pooldichtheid	ISO 8543	0.133 g/cm³*
Totaal Gerecycleerde Inhoud		66% (pre-consumer 66% post-consumer 0%)



Gegevens

Steken	ISO 1763	156,000/m² 39.8 per 10cm
Beschermende Behandelingen		SSP® Shaw Grondbescherming
Elektrostatische Weerstand	ISO 6356	≤ 2.0 kv (Stroll Test)
Gebruik Classificatie	EN 1307	33 Commercial Heavy
Luxeklasse	EN 1307	LC2
Dimensionale Stabiliteit	EN 986	≤ 0.2%
Contactgeluidsisolatie	ISO 10140	26db*
Geluidsabsorptieclassificatie	ISO 354/11654	0.20 Aw Class E*
Warmteweerstand m² K/w	ISO 8302	0.089 M² K/W Tog 0.89
Weerstand Tegen Droog Uitglijden	ISO 13893	Pass/No Pulled Loops
Kleurvastheid Voor Licht	ISO 105-B02	>6
Ontvlambaarheid	EN 13501-1	Bfl-S1 (Adhered Testing)
Stoel Met Wieltjes	EN 985	≥2.4 Continuous Use

15 Jaar Commercieel Beperkt subject to installation in full accordance with manufacturer's instructions and a regular effective cleaning and maintenance programme.

Aanbevolen Installatiemethode

Ashlar

Brick

Monolithic

Basketweave

Half B

26dB

17

EU.DOP/0493/CPR/0621/0422/BT

OOSTERHOUT SHOWROOM, VAARTWEG 10, 4905
BL NETHERLANDS (NLD)

Notified Body 2895

22

UK.DOP/0338/CPR/1220/0422/BT

SHAW EUROPE LIMITED BLACKADDIE RD,
SANQUHAR DG4 6DB, UNITED KINGDOM

Approved Body 0338

EN14041:2004/AC:2006

For use as an indoor floor covering as specified by the manufacturer

Corporate Headquarters +1 800 257 7429 | +1 706 532 7984 | Atlanta +1 404 853 7429 | Bengaluru +91 80 6773 0202 | Beijing +86 10 6568 588 | Chicago +1 312 467 1331 | Dubai +971 4 584 6956 | Hong Kong +852 2623 0371 | Latin America (Miami) +1 305 827 5912 | London +44 207 961 4120 | Los Angeles +1 800 233 1614 | Melbourne +61 3 9939 8543 | Mexico City +55 5010 7600 | Mumbai +91 22 6284 5050 | Nantong +86 400 800 7429 | New York +1 212 953 7429 | Paris +33 (0) 1 81 22 44 39 | San Francisco +1 415 955 1920 | Santiago +562 2431 5000 x 550 | São Paulo +55 11 3071 1702 | Shanghai +86 21 3338 4000 | Singapore +65 6733 1811 | Sydney +1 800 556 302

Coördinerende Producten

Carpet Tile: **Beam Comfortworx® Tile, Braid Comfortworx® Tile, Textile Comfortworx® Tile, Check Comfortworx® Tile, Houndstooth Taskworx® Tile, Check Taskworx® Tile, Jacquard Taskworx® Tile, Beam Taskworx® Tile, Braid Taskworx® Tile**

Kenmerken + Certificeringen

Certifications Below Apply Exclusively To The Carpet Tile Rug Itself And Not The Lokworx Tabs Adhesive

Declaration of Performance

Cradle to Cradle gecertificeerd™

Environmental Product Declaration (EPD)

Embodied Carbon (Cradle to Gate)

Life-Cycle Carbon Emissions

Building Research Establishment (BRE)

milieugarantie

ISO 9001

land van herkomst

BREEAM Contribution Credit

EU.DOP/0493/CPR/0621/0422/BT

Bronzen Vlak (Versie 3.1)

3de Partij Gecertificeerd in Overeenstemming Met ISO14044, ISO14025 & EN15804

4.37 kg CO₂/m²

Carbon Neutral

A+ Health/A+ Retail 0.34/0.453 Ecopoints

Terugnamebeleid Aangeboden Voor Alle Taskworx Producten

Gecertificeerd

Verenigd Koninkrijk

Certificate of Approval

Schools/Offices/Health/Industrial Shed

Retail

Well V2 Contribution Credit

X08 Hazardous Material Reduction

Part 1: Limit Hazardous Materials Optimization

X10 Volatile Compound Reduction

Part 1 (A): Manage Volatile Organic Compounds (VOCs) Optimization

X11 Long Term Emissions Control

Part 2: Flooring Optimization

X13 Enhanced Material Precaution

Part 1: Select Optimized Materials Optimization

X14 Material Transparency

Part 1: Promote Ingredient Disclosure Optimization

C2C Bronze Level (Version 3.1)

C2C Bronze Level (Version 3.1)

M1> Emissions Class For Building Material

C2C Bronze Level (Version 3.1)

C2C Bronze Level (Version 3.1)

Groen Leed Bijdragekrediet

"MR-krediet: openbaarmaking en optimalisering van bouwproducten
Milieuproductverklaringen - Optie 1: Milieuproductverklaring (EPD)"

"MR-krediet: Openbaarmaking en optimalisering van bouwproducten
MateriaalIngrediënten - Optie 1: Rapportage materiaalIngrediënten"

"MR-krediet: openbaarmaking en optimalisering van bouwproducten
MateriaalIngrediënten - Optie 2: Optimalisering van materiaalIngrediënten"

3rd Party Certified in Accordance with ISO14044, ISO14025 & EN15804

C2C Bronze Level (Version 3.1)

C2C Bronze Level (Version 3.1)

Air Quality

Indoor Air Comfort Gold

M1

Certified

Certified

Memberships

WGBC Framework

UKGBC

Emirates Green Building Council

Chemsec

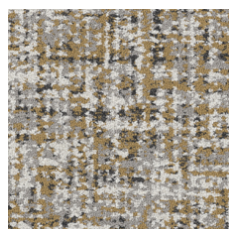
WGBC Framework

UKGBC

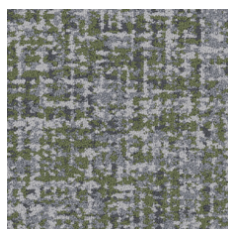
Emirates Green Building Council

Chemsec

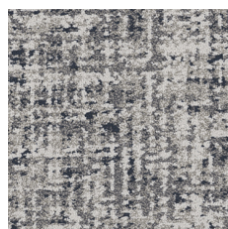
Lichtreflectiewaarde



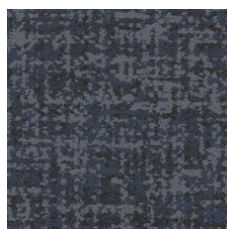
Saffron 79210
LRV 26.2



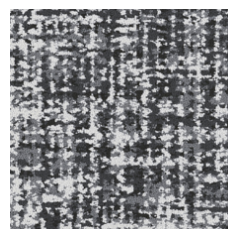
Bamboo 79375
LRV 14.7



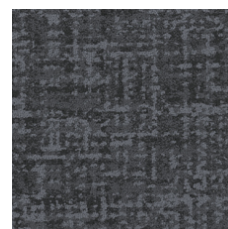
Denim 79485
LRV 18.6



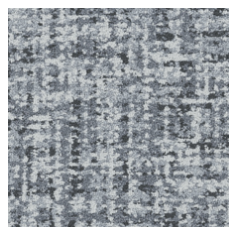
Indigo 79496
LRV 3



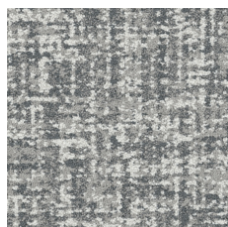
Merino 79500
LRV 15.3



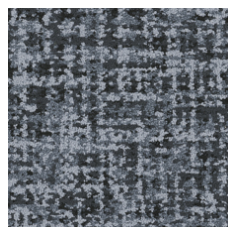
Patent 79505
LRV 3.1



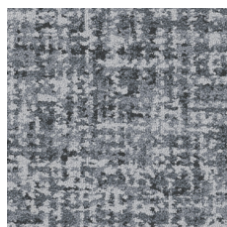
Cotton 79515
LRV 22.7



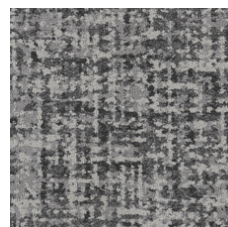
Muslin 79516
LRV 27.5



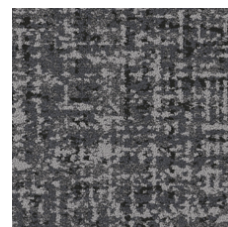
Mohair 79530
LRV 8.6



Wool 79535
LRV 13.6



Flax 79557
LRV 10.5



Angora 79596
LRV 7.2

Aanvullende Informatie

**Manufactured in ISO 9001 certified facility. Meets or exceeds all local and national regulations in country of manufacture.

[Installation Guidelines](#)

[Maintenance Guidelines](#)

[15 jaar commercieel beperkt](#)

Specifications are subject to nominal manufacturing variance. Material supply and/or manufacturing processes may necessitate changes without notice.

This product is an exclusive design and may not be duplicated in any manner. Use of this design in the creation of another product design is also strictly prohibited.

Visit shawcontract.com/testing for more information.



Corporate Headquarters +1 800 257 7429 | +1 706 532 7984 | Atlanta +1 404 853 7429 | Bengaluru +91 80 6773 0202 | Beijing +86 10 6568 588 | Chicago +1 312 467 1331 | Dubai +971 4 584 6956 | Hong Kong +852 2623 0371 | Latin America (Miami) +1 305 827 5912 | London +44 207 961 4120 | Los Angeles +1 800 233 1614 | Melbourne +61 3 9939 8543 | Mexico City +55 5010 7600 | Mumbai +91 22 6284 5050 | Nantong +86 400 800 7429 | New York +1 212 953 7429 | Paris +33 (0) 1 81 22 44 39 | San Francisco +1 415 955 1920 | Santiago +562 2431 5000 x 550 | São Paulo +55 11 3071 1702 | Shanghai +86 21 3338 4000 | Singapore +65 6733 1811 | Sydney +1 800 556 302

© 2024 Shaw Industries Group, Inc., a Berkshire Hathaway Company
May 19, 2024

3 of 3